



**SUSTAINABILITY COMMITTEE
CITY OF TARPON SPRINGS, FLORIDA
324 EAST PINE STREET
2ND FLOOR MEDIA ROOM**

THURSDAY, FEBRUARY 19, 2026
AT 6:00 PM

CALL TO ORDER

ROLL CALL

MINUTES

1. Approval of January 2026 meeting minutes

PUBLIC COMMENTS

DISCUSSION

1. Tampa Bay Regional Planning Council Government Liaison, Savannah Battreall
2. Future presentation/panel topics
3. Annual Sustainability Report to the BOC
4. Sustainable Development Guidelines - areas of focus

ITEMS FOR THE NEXT MEETING AGENDA

STAFF COMMENTS

1. Solar Feasibility Study Accepted by BOC on 1-27-26
2. Spring Newsletter published
3. Storm Drain Mural Selections Made by the Public Art Committee on 2-11-26
4. Touch a Truck: Saturday 2-21 at the library from 10:00AM-1:00PM
5. BOC item for 2-24-26: Resolution Authorizing a Fee for service at City owned Electric Vehicle charging infrastructure

COMMITTEE COMMENTS

ADJOURNMENT

This meeting is open to the public. Any person who decides to appeal any decision of the Board with respect to any matter considered at this meeting will need a record of the proceedings, and for such purpose may need to ensure that a verbatim record of the proceedings is made, which record includes the testimony and evidence upon which the appeal is to be based. The City of Tarpon Springs is committed to providing reasonable accommodation for access for the disabled. Anyone needing assistance regarding this meeting should contact the City Clerk's Office at (727) 938-3711, fax a written request to (727) 942-5619, or email a written request to cityclerk@ctsfl.us at least two days prior to the meeting. For further information regarding this meeting, please contact the Code Enforcement Division at (727) 937-0017 or TarponCode@tspd.us

MINUTES
SUSTAINABILITY ADVISORY COMMITTEE
CITY OF TARPON SPRINGS
JANUARY 15, 2026

THE SUSTAINABILITY ADVISORY COMMITTEE MET IN THE CITY HALL MEDIA ROOM, 324 E. PINE STREET, TARPON SPRINGS, FLORIDA, ON THURSDAY, JANUARY 15, 2026, AT 6:00 P.M., WITH THE FOLLOWING PRESENT:

DR. CAROL MICKETT	CHAIRPERSON
SIOBHAN NEHIN	MEMBER
LORETTA RIQUETTI	MEMBER
DR. MELINA SCALLY	MEMBER

STAFF PRESENT: HOLLY LANGSTON SUSTAINABILITY PROGRAM MANAGER

CALL TO ORDER

Chairperson Mickett called the meeting to order at 6:00 p.m.

ROLL CALL

Ms. Langston called roll. Dr. Melina Scally was excused from her absence as she had notified of a prior schedule conflict.

APPROVAL OF DECEMBER 2025 MINUTES:

MOTION: SIOBHAN NEHIN
SECOND: DR. MELINA SCALLY

To approve the minutes of December 2025 Sustainability Advisory Committee Meeting.

Vote on motion: Upon viva voce vote, the motion carried unanimously.

PUBLIC COMMENTS:

Denise Mannino was present and spoke during the public comment period regarding current topics in Sustainability.

DISCUSSION

1. Vote on Committee Chair and Co-Chair

A short discussion was held to identify which members may be interested in serving as Chair and Co-Chair. Ms. Riquetti and Dr. Scally both agreed that being so new on the committee they would defer the positions to the more long-standing members, Dr. Mickett and Ms. Nehin.

MOTION FOR DR. MICKETT SELECTED AS CHAIR AND MS. NEHIN AS VICE CHAIR:

MOTION: LORETTA RIQUETTI
SECOND: DR. MELINA SCALLY

To vote on the selection of Chair and Vice Chair for 2026.

Vote on motion: Upon viva voce vote, the motion carried unanimously.

2. Meet the Arborist- Mona Neville

The City's Arborist, Mona Neville, introduced herself to the Sustainability Committee and announced a variety of questions about tree related concerns, processes, etc.

3. Discussion of potential future public presentation topics

Dr. Mickett has reached out to Christine Carter at the Leepa Rattner Museum to gauge the interest in doing another community presentation or panel there. Committee members proposed some possible presentation topics that will be revisited at the February meeting. Some of these included the importance of preservation, how to have a successful yard/sustainable landscaping, Florida Friendly plants, how to help injured wildlife, a storm drain mural art presentation or tour, other opportunities for outreach/tabling.

4. Sustainable Development Guidelines

The Committee briefly discussed this topic and agreed to continue the discussion at the February meeting including a review of the Dunedin matrix.

ITEMS SUGGESTED FOR THE NEXT MEETING AGENDA

- Tampa Bay Regional Planning Council (TBRPC) liaison
- Future public/guest speaker presentation topics
- Annual report – discussion of 2025 and future initiatives/actions
- Sustainable Development Guidelines

STAFF COMMENTS:

- A Composting 101 presentation will be given at the Recreation Center on February 10 by Keep Pinellas Beautiful
- The spring newsletter is forthcoming
- Ms. Langston saw a coyote crossing Pine Street earlier this week at 5PM

COMMITTEE COMMENTS:

Committee members shared thoughts on the cold weather and the fact that this Committee has open seats and would like to encourage residents to apply to serve.

ADJOURNMENT:

MOTION: SIOBHAN NEHIN
SECOND: LORETTA RIQUETTI

To adjourn the meeting at 7:37 PM.

Sustainability Advisory Committee

Vote on motion: Upon viva voce vote, the motion carried unanimously.

DR. CAROL MICKETT
CHAIRPERSON

HOLLY LANGSTON
SUSTAINABILITY PROGRAM MANAGER

CITY CLERK'S NOTE: This meeting has been recorded in its entirety and the recordings are kept on file in the City Clerk's office for the required retention period.



TBRPC
TAMPA BAY REGIONAL
PLANNING COUNCIL

About the Tampa Bay Regional Planning Council

Government Liaison Program (GLP)

Savanah Battreall, Sustainability Planner

February 19th, 2026

TODAY'S PRESENTATION

- 1 What is the TBRPC?
- 2 Government Liaison Program
- 3 Projects of Interest
- 4 Collaboration Opportunities

Tarpon Springs Representative

Thank you for your leadership!

Mayor John Koulianos



TBRPC
TAMPA BAY REGIONAL
PLANNING COUNCIL



What is the TBRPC?

The mission of the TBRPC is to serve our citizens and member governments by providing a forum to foster communication, coordination, and collaboration in identifying and addressing issues and needs regionally.

- Established in 1962
- Service area includes Citrus, Hernando, Hillsborough, Manatee, Pasco, and Pinellas
- Focus areas:
 - Economic Development
 - Emergency Preparedness
 - Environmental Planning
 - Geographic Information Systems (GIS)
 - Planning & Design Visualization
 - Resiliency Planning



Government Liaison Program (GLP)

Provides beneficial resources and services to member governments throughout the six-county region

Services:

- Training and capacity building
- Research and analysis
- Policy and plan development
- Local mitigation strategy updates
- Community rating system recertifications and cycle visits
- Hazard vulnerability assessments
- Greenhouse Gas (GHG) analysis
- Scenario planning and 3D modeling
- Economic and fiscal impact analysis
- GIS data analysis, mapping, and application development

Available Technical Tools

In-House Technical Tools

Geographic Information Systems (GIS): ArcGIS Pro and ArcGIS Online

Economic Analysis/Modeling: REMI PI+, IMPLAN, ArcGIS Business Analyst

3D Visualization: SketchUp, Twinmotion, Unreal Engine, InCitu AR

Graphics: Photoshop, InDesign, and Illustrator

Videography/Animation: Premiere Pro and After Effects

Greenhouse Gas Inventories/ Forecasts: ICLEI ClearPath

Projects of Interest



Collaboration Opportunities

Join us at our upcoming events & workgroup meetings!

6th Annual Regional Resiliency Summit

- **When:** May 14th – 15th
- **Where:** Palmetto Marriott Resort

Tampa Bay Coastal Master Plan – Joint workgroup meeting

- **When:** March 3rd @ 2:00 PM – 4:00 PM
- **Where:** Virtual or in person at the TBRPC office, Pinellas Park

Agency on Bay of Coastal Management (ABCM) meeting

- **When:** March 12th @ 9 AM – 12 PM
- **Where:** Virtual or in person at the TBRPC office, Pinellas Park

Resilient Shorelines & Spaces workgroup meeting

- **When:** April 8th @ 10 AM – 11:30 AM
- **Where:** Virtual

All registration links & additional information on the TBRPC website under “News & Events.”





TBRPC
TAMPA BAY REGIONAL
PLANNING COUNCIL

THANK YOU!

QUESTIONS?

Savanah Battreall, savanah@tbrpc.org



Contact TBRPC!



105-28.4 SUSTAINABILITY

105-28.4.1 Purpose

This section is intended to promote sustainable development within the City of Dunedin by creating incentives for compact, mixed-use development patterns; encouraging solar and other alternative energy sources; promoting alternative means of transportation like bicycling and walking that can improve community health while helping reduce air pollution; protecting trees that absorb greenhouse gases and reduce storm water runoff and pollutants; and, encouraging water-efficient landscaping and protecting water resources.

105-28.4.2 Applicability

This section sets forth a range of site and building design options for sustainability to enhance other mandatory sustainability-related requirements integrated throughout this Code. For each development subject to this section, applicants shall select a sufficient number of sustainable site and building design options from [Table 105-28.4](#) to achieve the minimum number of points outlined for that type of development. Compliance with this section shall be determined as part of the entitlement review process.

- a. Nonresidential or Mixed-Use Development - consisting of new buildings or substantial renovations to existing buildings shall achieve a minimum score of 100 of 320 points available.
- b. Multifamily Residential Development - consisting of new buildings or substantial renovations to existing buildings shall achieve a minimum score of 100 of 320 points available.
- c. All Other Residential Development - consisting of new buildings or substantial renovations to existing buildings shall achieve a minimum score of 100 of 320 points available.
- d. Substantial Renovation for the purposes of this section shall include any renovation, rehabilitation, restoration, or repair work that includes an addition of floor area equal to 50 percent or more of the existing floor area; or the addition of new floors. The calculation shall include attached garages, but not include detached garages. For the purpose of calculation, the increase in floor area shall be aggregated over a three-year period.

105-28.4.3 Exemption

Any project not requiring design review.

105-28.4.4 Administration

- a. The Sustainability Worksheet shall be submitted with the application for Design Review. The required minimum sustainability points will be certified by the City's Sustainability Coordinator.
- b. 100 points of 320 are required utilizing at least four different categories.

SUSTAINABILITY MATRIX



TABLE 105-28.4 MENU OF SITE AND BUILDING DESIGN OPTIONS FOR SUSTAINABILITY			
TOPIC	Points	Submitted Points	Graded Points
ENERGY Intent: Encourage on-site renewable energy production; promote the design and construction of energy efficient buildings; reduce air, water, and land pollution from energy consumption; and reduce the heat island effect.			
1.1 Renewable Energy Sources Design and incorporate on-site renewable energy generation technologies such as solar, wind, geothermal, or biomass. Two points granted for each 1% of the project's annual electrical energy demand generated up to a maximum of 30 points.	2 to 30		
1.2 District Heating and Cooling Design and incorporate into the project a district heating and/or cooling system for space conditioning and/or water heating of new buildings in the project (at least two buildings total must be connected).	4		
1.3 Heat Island Reduction Use any combination of the following strategies for 50% of the non-roof impervious site landscape (including roads, sidewalks, courtyards, parking lots, and driveways). <ul style="list-style-type: none"> • Provide shade from open structures such as those supporting solar panels, canopies, walkways, pergolas, all with a Solar Reflectance Index (SRI) of at least 29. (SRI is a measure of the roof's ability to reject solar heat; a higher SRI yields a cooler roofing choice). (2 points) • Use paving material with Solar Reflectance Index (SRI) of at least 29.(1 pt) • Use and open grid pavement system (at least 50% pervious). (2 points) 	1-4		
1.4 Cool Roofs/Walls Use roofing materials that have an SRI equal to or greater than 78 for low- sloped roofs (<2:12) or 29 for steep-sloped roofs (>2:12) for a minimum of 75% of the roof surface of all new buildings within the project. (2 points) -OR- Install a vegetated roof on a minimum of 50% of the total project roof area, or at least one vegetative exterior wall of structure. (5 points)	2—5		
1.5 Solar-Ready Design <ul style="list-style-type: none"> • For stand-alone buildings, design and build the project so that it will readily accommodate the installation of solar photovoltaic panels or solar thermal hot water heating devices, including roof load, roof pitch and orientation. (5 points) • For projects with multiple buildings, design and build at least 20% of 	2—10		

SUSTAINABILITY MATRIX

Rev 2019

the buildings to be solar-ready as described above. Two additional points granted for each additional 20% provided up to a total of 100% solar-ready buildings. (2—10 points)			
<p>1.6 Solar Heated Pool In lieu of gas or electric conventional heating:</p> <ul style="list-style-type: none"> • Private pool or hot tub (2 points) • Public pool (6 points each) <p>* Maximum of 30 per development</p>	2—30		
<p>RECYCLING AND WASTE REDUCTION Intent: Encourage recycling of household and commercial projects; reduce the amount of waste hauled to and disposed of in landfills, and promote the reuse of materials.</p>			
<p>2.1 Waste Reduction-Construction Make provisions to recycle/salvage at least 50% of non-hazardous construction and demolition debris.</p>	5		
<p>2.2 Waste Reduction-Composting Provide on-site composting station or location for all occupants with scheduled on site distribution.</p>	2		
<p>2.3 Recycling Stations/Dumpsters As part of the project, include at least one station per building dedicated to the collection, separation, and storage of materials for recycling including, at a minimum, paper, corrugated cardboard, glass, plastics, and metals. Establish a City-approved schedule and plan with the local trash hauler for retrieving the recyclable materials on a weekly basis.</p>	3		
<p>2.4 Recycle Containers In mixed-use and non-residential developments, include recycle containers adjacent with other waste-collection receptacles in areas accessible to pedestrians including streets, walkways, and common areas.</p>	2		
<p>2.5 Pet Waste Station One point per approved pet waste station, a maximum of 2 points.</p>	1—2		
<p>2.6 Cigarette Butt Station One point per approved cigarette butt station, a maximum of 2 points.</p>	1—2		
<p>2.7 Recycled Content in Infrastructure For new roadways, parking lots, sidewalks, and curbs (above-ground structured parking and underground parking are exempt from this option), any aggregate base and aggregate sub-base shall be at least 50% by volume recycled aggregate materials such as crushed cement concrete and asphalt concrete.</p>	5		
<p>2.8 Salvage Building Materials</p> <ul style="list-style-type: none"> • Use green building materials (recycled materials, locally-produced materials, sustainably-harvested wood, etc.) in the construction of the project. (5 points) • Use furniture made from recycled materials, locally-produced materials, sustainably-harvested wood, etc. in the project. (5 points) • Use flooring made from recycled or rapidly renewable materials such as PET carpeting, bamboo, cork flooring, etc. in the project. (5 points) 	5-15		

<p>URBAN NATURE Intent: Provide a variety of appealing and comfortable open spaces close to work and home; encourage physical activity and time spent outdoors, support natural resources and habitat conservation, and promote social networking, civic engagement, personal recreation and other activities.</p>			
<p>3.1 Minimum Open Space Provide common open space that exceeds the base requirements of <i>Section 105-22</i> by 10%. Five additional points granted for each additional 10% up to a total of 40% above code.</p>	5-20		
<p>3.2 Habitat Conservation Higher Standards For implementing higher standards on sites have significant habitat. For the purposes of this and the following item, "significant habitat" includes, but is not limited to (5 points every category with a maximum of 20 points):</p> <ul style="list-style-type: none"> • Habitat for species that are listed or are candidates for listing under state or federal endangered species acts; • Grand trees • Wetlands • Mangroves 	5-20		
<p>3.3 Organic Farming Community sustainable food such as eggs, milk, honey, or chicken. Co-op featuring the same items count for points.</p>	1—5		
<p>3.4 Community Gardens For residential or mixed-use projects dedicate permanent and viable growing space and related facilities (such as greenhouses) within the project at a minimum of 10 square feet per dwelling for 20% of the project. Provide fencing, watering systems, soil, and/or garden bed enhancements (such as raised beds), secure storage space for garden tools, solar access, and pedestrian access for these spaces.</p>	10		
<p>3.5 Tree Canopy Provide trees in an amount that exceeds the base requirements of <i>Section 105-35 Trees</i>, by 10%. Two additional points granted for each additional 10% up to 50% above Code.</p>	2-10		
<p>TRANSPORTATION Intent: Promote public health by encouraging daily physical activity associated with alternative modes of transportation such as walking and bicycling; encourage the use of transportation and, design parking facilities to minimize adverse environmental impacts to pedestrians.</p>			
<p>4.1 Charging Stations For new residential, nonresidential and mixed-use buildings, provide charging stations in the parking area. Two points per station - max of ten.</p>	2-10		
<p>4.2 Bike Sharing Program 1 point for every 10 bikes; 2 points maximum.</p>	2		
<p>4.3 Facilities for Bicycle Commuters Provide the following:</p> <ul style="list-style-type: none"> • Indoor or self-contained bicycle storage lockers equal to a minimum of 5% of the vehicle parking spaces provided. (2 points) • Shower and dressing areas for employees (2 points) 	2—4		
<p>4.4 Developer-Sponsored Transit For a minimum of three years, provide year-round, developer-sponsored transit service (vans, shuttles, or buses) from at least one central point in the project to major transit facilities and/or other major destinations such as a</p>	5		

SUSTAINABILITY MATRIX

Rev 2019

retail area, tourist destination or employment center.			
<p>4.5 Parking On SR 580, locate all new off-street surface parking lots at the side or rear of buildings, leaving building frontages and streetscapes free of surface parking lots. Building entrances must be easily accessible from the public way. (2 points) – (OR) –</p> <p>Provide structured parking to meet 20% of the total parking requirement for nonresidential and multifamily residential projects. Note: Two additional points will be granted for each additional 20% up to a total of 100%. In addition, as applicable on SR 580, locate all new off-street surface parking lots at the side or rear of buildings, leaving building frontages and streetscapes free of surface parking lots. (2—10 points)</p>	2—10		
<p>WATER Intent: Minimize water use in buildings to reduce impacts to natural water resources, and minimize outdoor water use for landscape irrigation.</p>			
<p>5.1 Water-Efficient Landscape Limit turf grass beyond base code requirements. • Single-family residential: Turf limited to 25% of landscaped area.</p>	2		
<p>5.2 Water-Efficient Plants To the extent possible, all landscaping plants, including those on green roofs, shall be selected from a list of water-efficient vegetation maintained by the Florida Yards and Neighborhoods Handbook from the University of Florida, and utilize the principles of Florida Friendly Landscaping.</p>	2		
<p>5.3 Landscape Irrigation System Drip or subsurface irrigation systems shall be utilized for all landscape irrigation systems when irrigation is necessary. Drip irrigation systems must be equipped with pressure regulators, filters, and emitters. Each drip emitter must be rated at less than 20 gallons per hour (gph). (1 pt for drip, 2 pts for subsurface)</p>	1—2		
<p>5.4 Surface Treatments Non-turf landscaped areas must be completely covered by a 2" minimum layer of air- and water-permeable mulch to reduce evaporation. Living groundcovers qualify as mulch provided the individual plants are installed at sufficient density to assure 100 percent ground coverage at maturity. If a weed barrier is used beneath the mulch, it must be manufactured to be air- and water-permeable to reduce evaporation and run-off.</p>	1		
<p>5.5 Vault System or Treatment Wetland Stormwater Treatment • Utilization of a vault system for stormwater management to aid in the increased flow rate due to development. - or - • Installation of a treatment wetland that creates a natural environment for flora and fauna and aids in the removal of nutrients from stormwater.</p>	8		
<p>5.6 Rain Barrels Reduce water use, stormwater runoff, and erosion by the utilization of rain barrels or cisterns to collect rain water. The installed rain barrel or cistern shall be directly connected to the on-site irrigation system (1 point per barrel, up to 4 points).</p>	1—4		

ADDITIONAL STRATEGIES FOR SUSTAINABILITY

Intent: Implement strategies of existing above-code programs or explore and implement new, unique or innovative ways to increase the sustainability of the project and community.

<p>6.1 Above-Code Programs Design and build the project to meet the standards of an above-code program such as LEED, Green Globes, Energy Star, FGBC, etc. As a good faith demonstration of the developer’s intent, the applicant will utilize solar energy to power the project or achieve green building certification demonstrating the method that will be used to achieve said certification. The most recent LEED scorecard, most recent version of the FGBC checklist, or equivalent green building certificate checklist shall be submitted depending on the certification the developer is seeking.</p>	20		
<p>6.2 Innovative Products or Strategies Provide documentation of an innovative product or strategy that increases the sustainability of the project or community but is not provided in this Section (i.e. Stormwater Placard). Up to five Innovative Products or Strategies may be submitted for review. Points awarded at the discretion of the Development Review Committee based on the capacity of the proposed product or strategy to increase the sustainability of the project in any of the above categories. (1—5 points for each Innovative Strategy)</p>	1—15		
<p>6.3 Higher Flood Plain Management Standards Three points for each 1 foot of freeboard above the required minimum, for a maximum of 15 points.</p>	3-15		
<p>6.4 Phased Development For projects consisting of 5 acres or greater, and capable of constructing in phases (i.e. a combination project of retail and multi-family housing, a housing development with multiple housing types), the utilization of phased construction in which a section is completed to final stabilization prior to commencement of construction on a subsequent phase of the project. Points based on size and number of phased to be completed. 3 points for 5-10 acre project with two phases. 4 points for 10-15 acre project with three phases. 5 points for projects over 15 acres with at least three phases of development.</p>	3-5		
<p>6.5 Sustainable Art Installation Points awarded by the City’s Arts & Culture Committee</p>	1-5		
<p>6.6 Hurricane Hardening Designed and constructed to meet a recognized hurricane hardening certification standard.</p>	20		
TOTALS			

SUSTAINABILITY NEWS

City of Tarpon Springs, Spring 2026



IN THIS ISSUE

- Sustainable Spirits
- Go Green This Spring
- The Root to a Successful Garden
- A Guide to being Water-Wise
- Springing Forward
- Upcoming Events & More!

SUSTAINABLE SPIRITS

Tarpon Springs Distillery is committed to providing craft spirits that are both high-quality and eco-conscious. By integrating sustainable practices into their daily operations, they ensure that nothing goes to waste.

A key part of their process involves separating spent grain husks, which are then repurposed as nutrient-rich compost or baked into crunchy dog treats. It's a simple "zero-waste" approach to divert organic material away from our landfills and back into our community. The distillery's green initiatives extend well

beyond the tasting room. Their landscaping features Florida native plants, which require much less water and fertilizer than ornamental landscaping. Not only that, these Florida Friendly plants serve as vital habitat for pollinators who support the health of our local ecosystems.

By combining innovative upcycling with thoughtful landscaping, Tarpon Springs Distillery is showcasing how local businesses can act as environmental stewards in their communities.

GREEN-CLEANING: A GUIDE TO ECO-FRIENDLY DECLUTTERING

Upcycling

A quick DIY project can give something a second life as something “better” than the original. Try painting an old jar for new decor.

Repurposing

Look for new ways to use items that no longer serve their primary purpose. For example, old t-shirts can be cut into reusable rags.

Repairing

Before getting rid of something that no longer serves its purpose, try to fix it. For instance, replacing a broken zipper or replacing a faulty wire can save that item from going to a landfill.

Donating

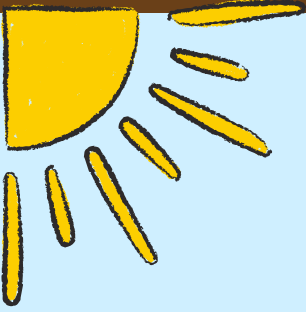
Give items that you no longer need back into your community. Focus on local shelters, libraries, or “Buy Nothing” groups.

Recycling

For items beyond use or repair, dispose of them properly. Research local facilities that take “hard to recycle” items like electronics.



THE ROOT TO A SUCCESSFUL GARDEN



Site Selection

Starting a garden begins with choosing the right site. Find a well-draining location that receives a minimum of 6 hours of direct sunlight during the growing season.

Planning

Develop a plan before you start planting. Make a list of supplies you will need and plants you want to grow. Draw out a map of your garden that includes the name, location, and planting date(s).

Soil Preparation

Assess the condition of your garden site's soil. Test the pH, water retention, aeration, and structure, then add any necessary amendments to your soil, like compost or mulch.

Fertilizing

If your garden doesn't have enough organic matter to supply the necessary nutrients to your garden, you may apply 2 or 3 applications of fertilizer during the growing season (*please refer to Pinellas County for local fertilizer restrictions*). Perform a soil test prior to determine which nutrients to apply.

Irrigation and Drainage

The frequency you water your garden depends on the type of plants you choose, the age of your crop, your soil type, and how frequent it rains. You can conserve water by adding organic matter to the soil and opt for more efficient irrigation systems, such as drip irrigation and micro sprayers.

Pest Management

A variety of pests can impact your garden, including: weeds, insects, mites, diseases, nematodes, and animals such as birds and raccoons. To manage these pests, use non-toxic practices such as planting flowers nearby to attract beneficial insects, control weeds to discourage the spread of pests and disease, and remove dying leaves and plants to slow disease spread.



A GUIDE TO BEING WATER-WISE: CURRENT CONDITIONS

Lawn Watering Limited to One Day Per Week

-  District's Modified Phase II Water Shortage Order (once per week)
-  Continue following restrictions from St. Johns River WMD
-  Continue following restrictions from Suwannee River WMD
-  Continue following restrictions from South Florida WMD




**WATERING IS PROHIBITED
FROM
8:00 AM - 6:00 PM**

If your house number ends in:	You may water on:
0 or 1	Monday
2 or 3	Tuesday
4 or 5	Wednesday
6 or 7	Thursday
8 or 9	Friday
Mixed/No Address	Friday

Click [here](#) for all water use rules.

A Modified Phase II Water Shortage Order was announced on January 27, 2026. The order applies Feb. 8, 2026, through July 1, 2026.

 The Southwest Florida Water Management District Governing Board declared a Modified Phase II “Severe” Water Shortage due to dry conditions throughout the region, which requires all residents, including those on private wells, and in cities and counties to follow one-day-per-week watering restrictions.

 The Southwest Florida Water Management District received below average rainfall during its summer rainy season and currently has a 13-inch regional rainfall deficit compared to the average 12-month total. In addition, water levels in the District’s water resources, such as aquifers, rivers and lakes, are continuing to decline and many are below normal. Public water supplies in the Tampa Bay area are lower than expected at this time of year. Outdoor water use accounts for more than 50% of water consumed by households.

SPRINGING FORWARD

The Sustainability Division has exciting plans for 2026. This year we will focus on several action items from our award-winning Sustainability Plan, including:



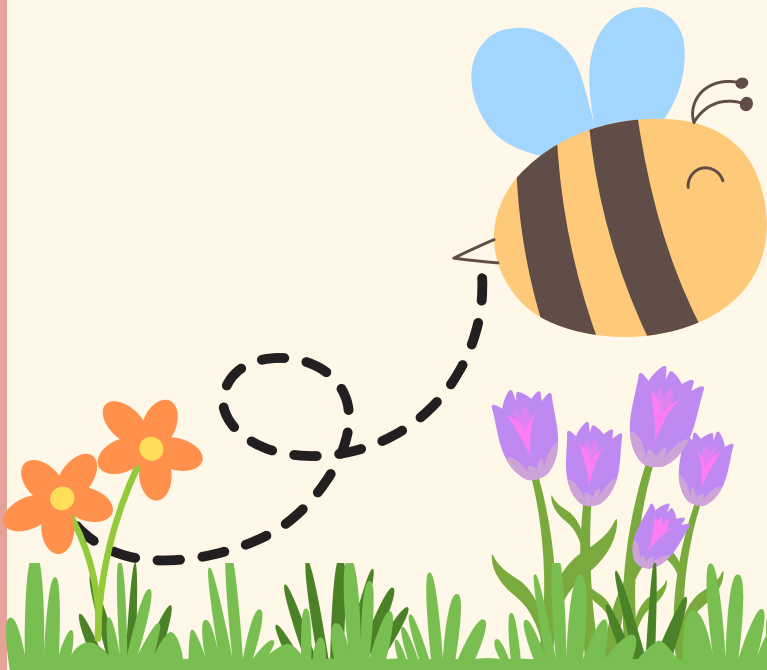
Advancing Clean Energy Initiatives



Promoting Water Conservation



Recycling Education & Outreach



Scheduled Sustainability Advisory Committee Meetings



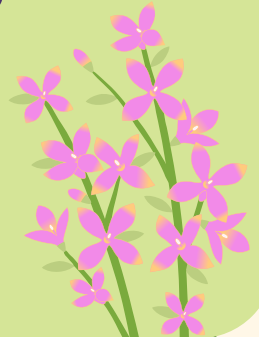
February 19th



March 19th



April 16th



YOUR VOICE MATTERS – VOLUNTEER TODAY!

PASSIONATE ABOUT
SUSTAINABILITY?

APPLY TO SERVE ON THE
SUSTAINABILITY ADVISORY
COMMITTEE!



COMPLETE AND SUBMIT
THIS APPLICATION
TO THE CITY CLERK'S
OFFICE.

UPCOMING EVENTS

FEBRUARY-APRIL

CITY EVENTS

Composting 101

February 10th: 6:30-7:30 PM at the Tarpon Springs Recreation Department
400 S Walton Ave, Tarpon Springs, FL 34689

Touch-a-Truck

February 21st: 10:00 AM-1:00 PM at the Tarpon Springs Public Library
138 E. Lemon Street Tarpon Springs, FL 34689

Earth Day Celebration

April 20th-25th at the Tarpon Springs Public Library
138 E. Lemon Street Tarpon Springs, FL 34689

NEARBY EVENTS

Hope Spot Festival

February 8th: 10:00 AM-2:00 PM at the Dunedin History Museum
349 Main St, Dunedin, FL 34698

Resilient Roots: Tree Planting at Howard Park

February 14th: 10:00 AM - 2:00 PM at Fred Howard Park
1700 Sunset Drive, Tarpon Springs, FL 34689

QUESTIONS? CONTACT US!

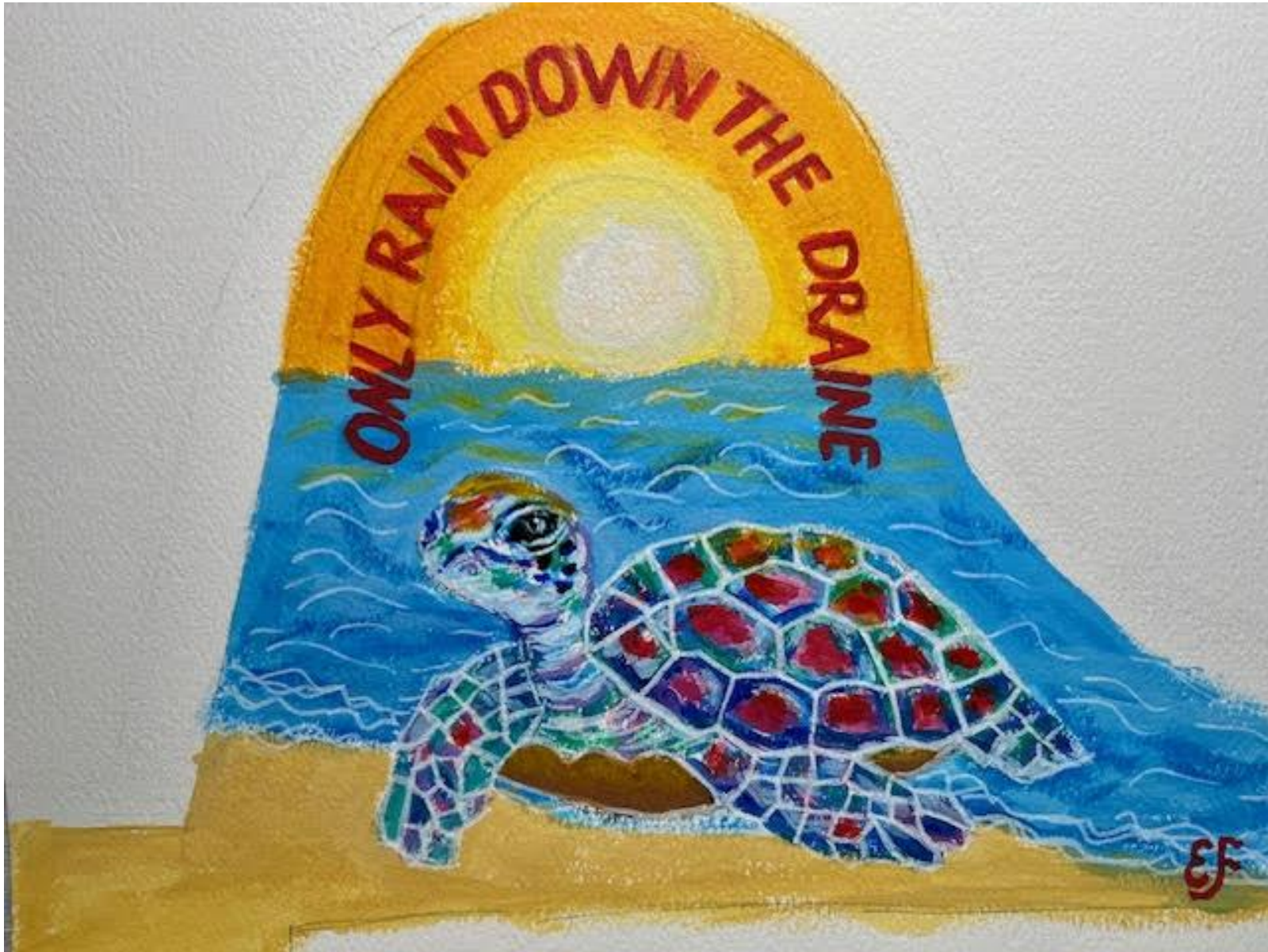
sustainability@ctsfl.us
connecttarpon springs.com/sustainability



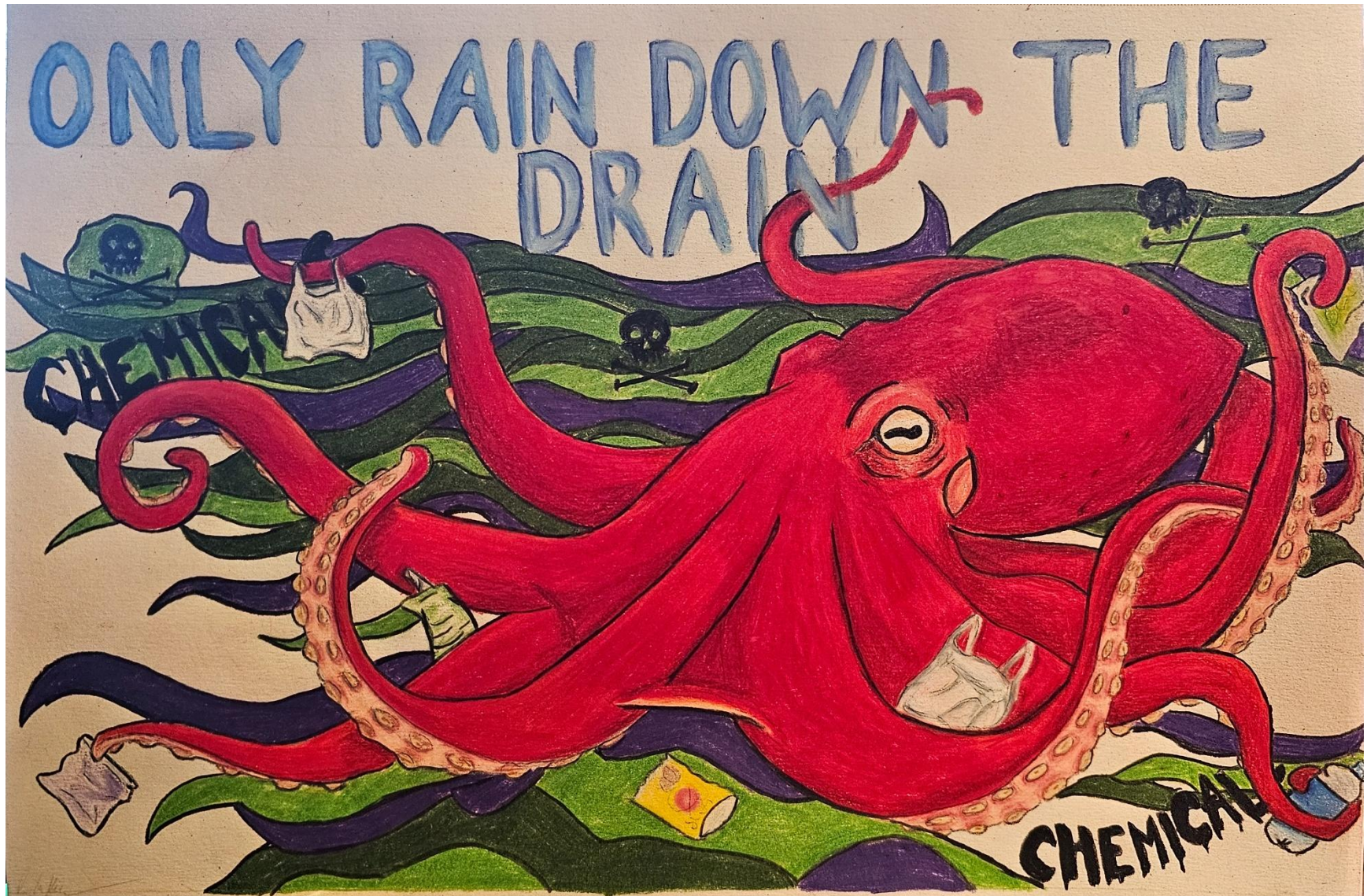
STORM DRAIN MURAL PROJECT

SUBMISSIONS

Location: Safford & Spruce



3.A. Dodecanese & Athens



Artist #4:
Tarpon Avenue



5.B. FOR: 401 E. Martin Luther King, Jr. Drive



401 E. Martin Luther King Jr. Drive